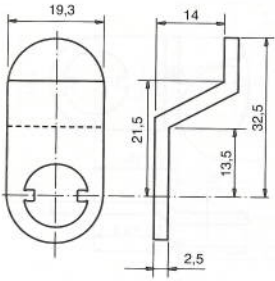
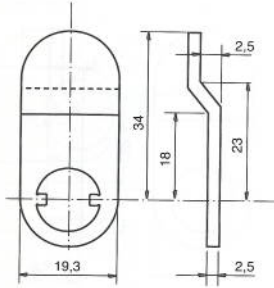


Aufpreis Spezial-Hebel siehe sep. Seite

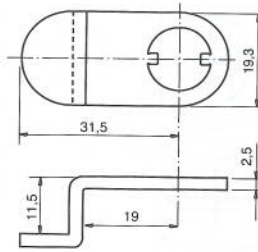
<p>448.920 Waagrecht Spez.</p>	<p>448.921 Waagrecht Spez.</p>	<p>448.940 Waagrecht Spez.</p>		<p>448.850 Waagrecht Spez.</p>
<p>448.851 Waagrecht Spez.</p>	<p>448.870 Waagrecht Spez.</p>	<p>448.930 Waagrecht Spez.</p>		
<p>448.942 Waagrecht Spez.</p>	<p>448.871 Waagrecht Spez.</p>	<p>448.872 Senkrecht Spez.</p>	<p>448.880 Waagrecht Spez.</p>	
<p>448.950 Senkrecht Spez.</p>	<p>448.960 Waagrecht Spez.</p>	<p>448.890 Senkrecht Spez.</p>	<p>448.900 Senkrecht Spez.</p>	



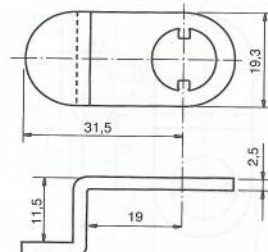
448.910  
Senkrecht Spez.



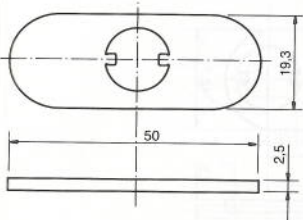
448.801  
Senkrecht Spez.



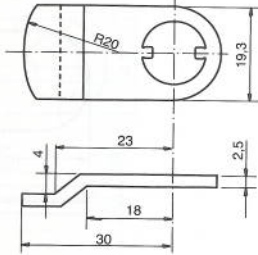
448.810  
Waagrecht Spez.



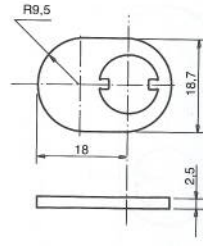
448.811  
Waagrecht Spez.



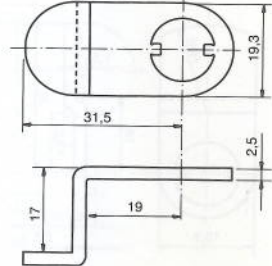
448.980  
Waagrecht Spez.



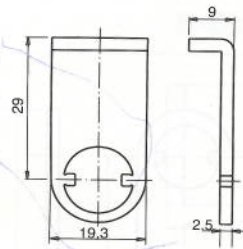
448.410  
Waagrecht Spez.



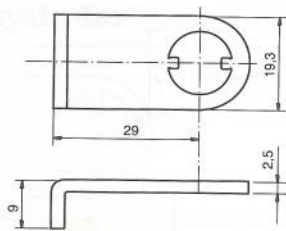
448.590  
Waagrecht Spez.



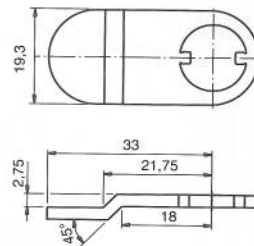
448.820  
Waagrecht Spez.



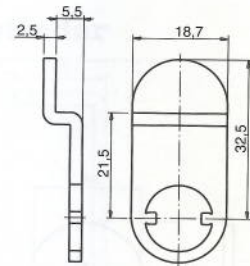
448.829  
Senkrecht Spez.



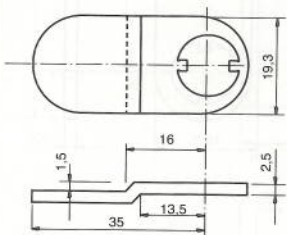
448.830  
Waagrecht Spez.



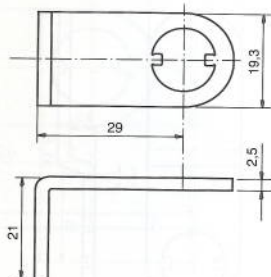
448.680  
Waagrecht Spez.



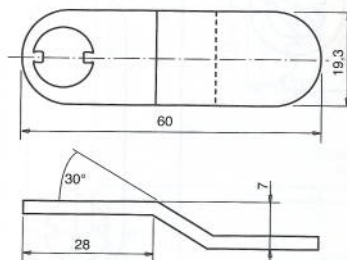
448.750  
Senkrecht Spez.



448.770  
STANDARD Serie 500  
Stahltüren



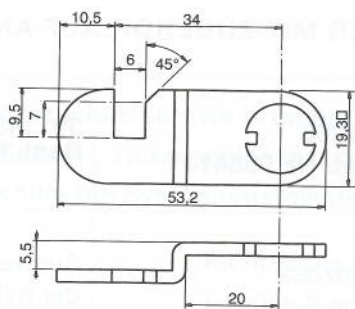
448.831  
Waagrecht Spez.



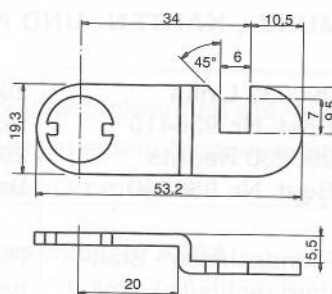
448.840  
Waagrecht Spez.

<p>448.780 Senkrecht Spez.</p>	<p>448.790 <b>STANDARD</b> Serie 600+TWIN Stahltüren</p>	<p>448.800 Senkrecht Spez.</p>	<p>448.430 Waagrecht Spez.</p>
<p>448.440 Senkrecht Spez.</p>	<p>448.230 Senkrecht Spez.</p>	<p>448.220 <b>STANDARD</b> alle Serien Holztüren</p>	
<p>448.531 Senkrecht Spez.</p>	<p>448.530 Waagrecht Spez.</p>		<p>448.240 Universal</p>
<p>448.280 Senkrecht Spez.</p>	<p>448.282 Senkrecht Spez.</p>		

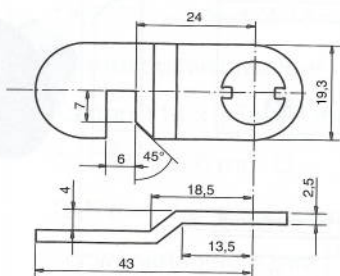




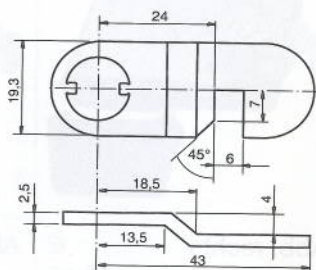
448.535  
Waagrecht Rechts Spez.



448.536  
Waagrecht Links Spez.



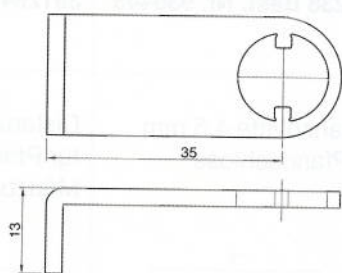
448.970  
Waagrecht Rechts Spez.



448.971  
Waagrecht Links Spez.

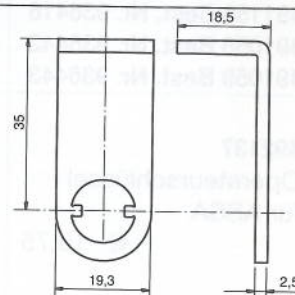
### Schließhebel für Briefkästen

#### 5-Stift Zylinder

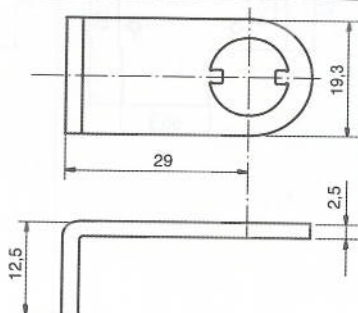


448.873  
ASSA-RUKO

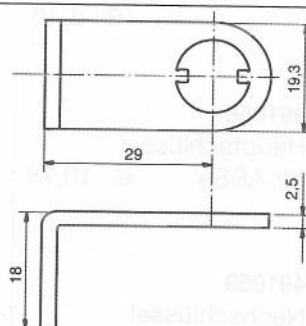
#### 6-Stift Zylinder



448.872  
ASSA-RUKO



448.874  
Renz (Standard)  
Ju (Standard)



448.834  
Renz (Standard)  
Ju (Standard)